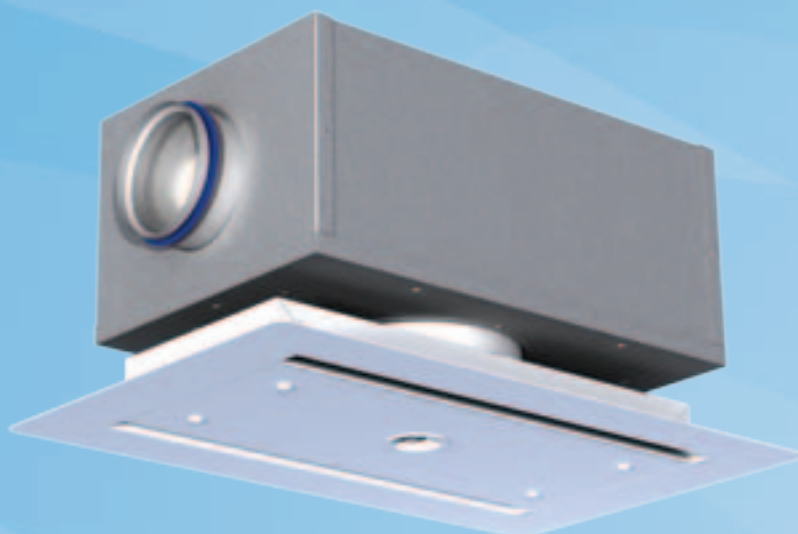


## HMC Single Duct Cabin Unit

for Crew Cabins,  
Manual Model



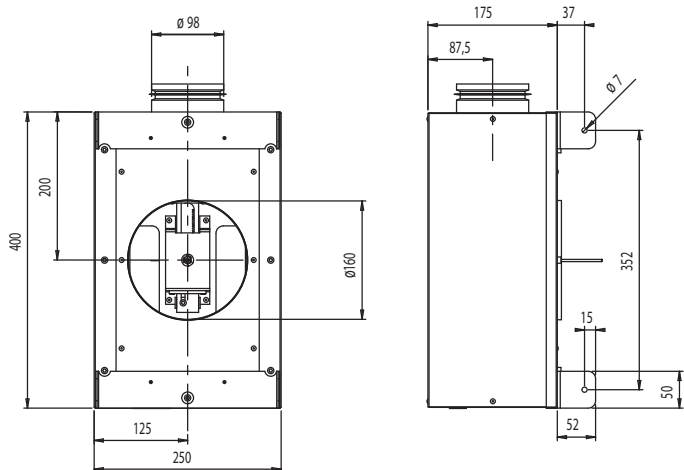
HMC in the picture with TCL diffuser

The Halton HMC is a manually operated cabin unit for single duct applications. The unit can be installed directly through one ceiling blade (300 mm). Airflow is controlled through an adjusting knob installed through the diffuser. The control mechanism has mechanical limits for minimum and maximum airflows. Airflow limits can be easily set during commissioning. HMC is recommended to be used in conjunction with Halton's TCL diffuser that is specifically designed for HMC cabin unit. TBM/K and TDM/K diffusers are also available to be used with HMC.

- Pressure range from 0 Pa...200 Pa
- Airflow range 0 m<sup>3</sup>/h...180 m<sup>3</sup>/h
- Airflow adjustment with diffuser knob, painted with the diffuser color
- Mechanical max/min airflow limits for easy commissioning
- Easily tailored for different types of installations
- MED approved for B-0/B-15 installations

PART	MATERIAL
Casing	Hot galvanized steel
Spigots	Hot galvanized steel and EPDM rubber
Insulation	Mineral wool, s = 25 mm, MED approved

## GENERAL HMC drawings

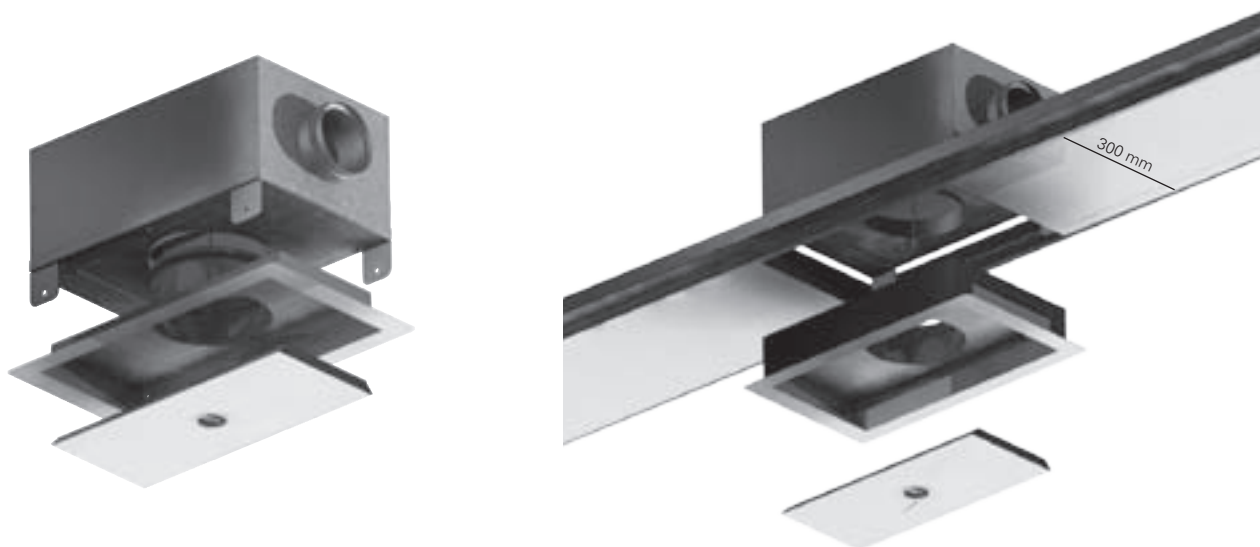


## DIMENSIONS TABLE

HMC Dimensions					
	B	L	H	ØD1 male/ female	ØD2 male
HMC	250	400	175	159/161	99

Note:  
male connection: outer dimension  
female connection: inner dimensions

## MAIN PARTS



### FUNCTION

Airflow is controlled via an adjusting knob installed through the diffuser. The control mechanism has mechanical limits for minimum and maximum airflows.

### INSTALLATION OPTION

HMC can be installed directly through one ceiling blade.

### ADJUSTMENT

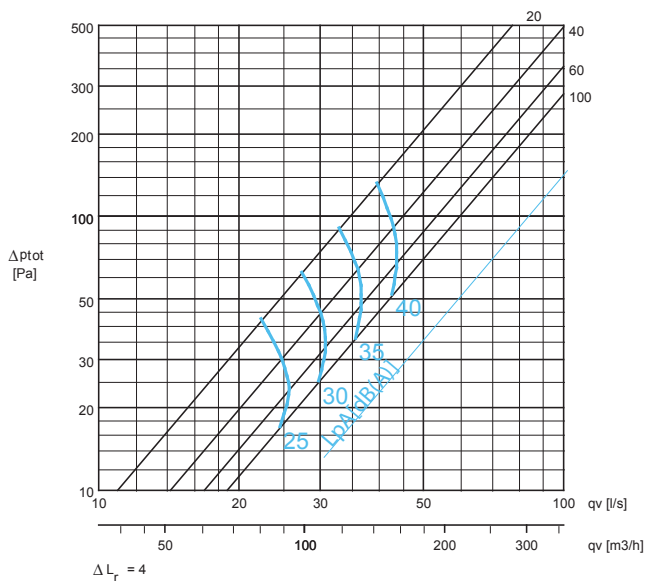
The supply flow rate is determined by using a hand-held measurement device.

Adjust the minimum airflow rate by rotating the D-shape bar until the desired setting is achieved.

Move the minimum airflow mechanical limiter against the stand and tighten socket cap screw. Adjust the maximum airflow rate by rotating the D-shape bar until desired setting is achieved. Move the maximum airflow mechanical limiter against the stand and tighten socket cap screw.

## Performance data for HMC

### Pressure drop and sound levels (cabin sound absorption 4 dB(A))



## Sound attenuation

Sound attenuation (dB) of HMC

	f (Hz)	63	125	250	500	1000	2000	4000	8000
HMC-100	$\Delta L$ (dB)	3,7	4,1	12,4	21,5	23,8	33,4	34,9	35,2
$\Delta L$ : Sound attenuation not including end reflection									

Sound attenuation (dB) of HMC with TCL-160 diffuser

	f (Hz)	63	125	250	500	1000	2000	4000	8000
HMC-100	$\Delta L$ (dB)	3,7	6,4	16,9	21,7	31,0	41,2	35,7	36,8
$\Delta L$ : Sound attenuation not including end reflection									

